

# Specifications



## COMBINE6 HDR™

### In-Ear Monitor Transmitter Combiner



The COMBINE6 HDR™ is a high performance signal combiner for in-ear monitor systems (IEMs). In a half-rack-space enclosure, it combines up to six IEM transmitter outputs together to a single antenna output. The active circuitry was designed with RF Venue's HDR™ (High Dynamic Range) approach that increases IEM signal quality by lowering intermodulation distortion, and improves the system performance for both IEMs and wireless microphones sharing the same RF spectrum.

The COMBINE6 HDR includes a built-in passive expansion circuit. This allows for a second unit to be added for a total of 12 IEM channels in a single rack space (1RU). Included in the package are rack ears and a joining plate so you can mount it alone or with another RF Venue half-rack device in a single rack space.

### What's In The Box

- One COMBINE6 HDR
- One 12V 40-watt power supply
- One IEC power cable
- One set of rack ears (short and long)
- One half-rack connecting plate and mounting hardware kit

**Premium interconnect cable packages and antenna cables available separately and are also included in RF Venue product bundles.**

### Specifications

Frequency Range USA + CAN	470 – 608 MHz
Frequency Range INT'L	470 - 698 MHz
RF Inputs	6 BNC inputs
Maximum Input Power	60 mW (+18 dBm) per port
Input Port Isolation	50 dB, typical
Signal Overload Threshold	17 dBm, typical
Passive Circuit Loss	4 dB, typical
DC Power Supply	External, 100 – 240 VAC, 50/60 Hz, 1 A
DC Power In	+12 V, 3 A
Dimensions (depth; width, height)	223.5 × 210 × 44.5 mm / 8.8 × 8.25 × 1.75 in
Weight	1.6 kg / 3.56 lb



#### WARNING

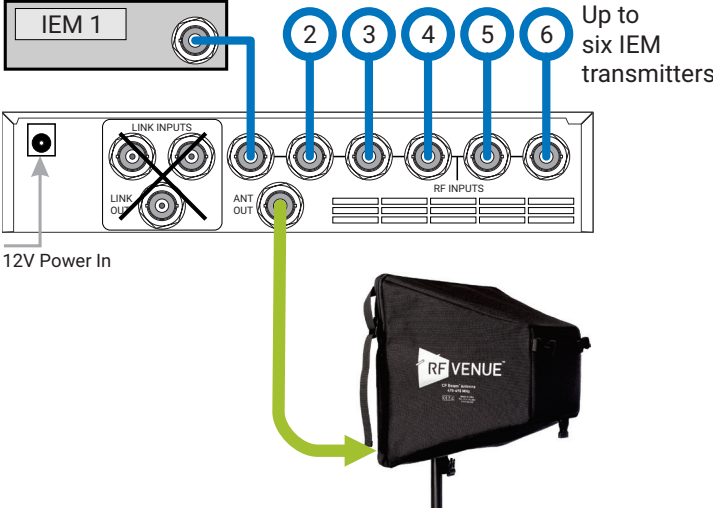


- When operating on AC power, always plug the power supply into a grounded receptacle.
- Do not expose this appliance to heat or moisture.
- To avoid shock, do not remove cover. Refer all service to qualified service personnel or authorized distributors.
- Improper installation may result in an RF hazard.

**CAUTION:** Attempting to disassemble or modify the device may cause damage that will not be covered by warranty and/or may cause personal injury. Do not pull on cables or connectors.

# One COMBINE6 HDR™

Up to six in-ear monitor transmitters



# Two COMBINE6 HDR™

Up to 12 in-ear monitor transmitters

