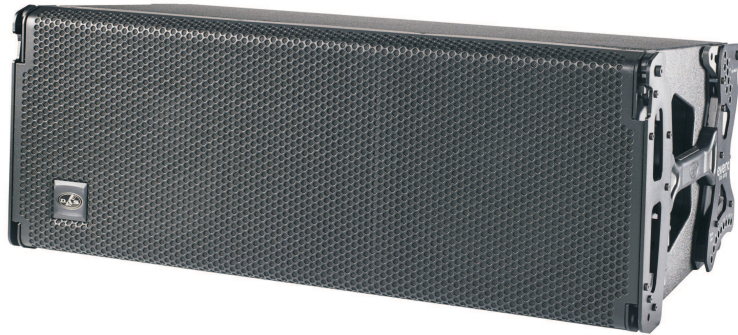


# EVENT-212.120A

Powered  
3-way line array system



- » **Class D amplifier 3 x 1000 Wpeak**
- » **FIR filters for linear phase response**
- » **2 x 12" DAS loudspeakers in dual band configuration**
- » **1 x DAS M-75 compression driver**
- » **120° wide coverage**
- » **DAScontrol™ with presets and configurations**

The DAS EVENT-212.120A is a powered, 3-way line array which employs two DAS 12" loudspeakers in a dual band configuration where each speaker operates in a specific frequency range. At low frequencies, the speakers work in tandem for maximum power, each driven by a dedicated amplifier channel providing 1000 Wpeak output power.

The DAS loudspeaker units have been teamed up with a single M-75 compression driver and purpose-designed injected aluminum high frequency waveguide to provide unmatched performance, sensitivity and coverage.

The EVENT-212.120A line array incorporates the

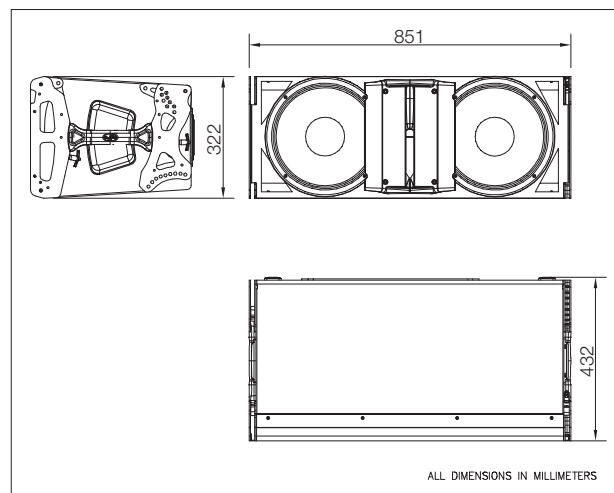
interface which offers a quick and hassle-free set-up of the systems in arrays and easy alignment with the EVENT-218A and EVENT-121A subwoofer systems. Presets for the number of units of the array, HF compensation for throw distances, and correction for the splay angle of the array can be selected by way of DAScontrol™ and the LCD screen.

The powerful DSP of the EVENT-212.120A includes Finite Impulse Response (FIR) filters providing linear phase response and precise impulse response. The EVENT-212.120A can be use as down-fill unit in EVENT-212A arrays.

## Technical Specifications

|   |   |
|---|---|
| <b>Nominal LF Power Amplifier</b>       | 1000 Wpeak - 500 Wcontinuous  |
| <b>Nominal MF Power Amplifier</b>       | 1000 Wpeak - 500 Wcontinuous  |
| <b>Nominal HF Power Amplifier</b>       | 1000 Wpeak - 500 Wcontinuous  |
| <b>Input Type</b>                       | Balanced Differential Line  |
| <b>Input Impedance</b>                  | 20 kohms  |
| <b>Sensitivity<sup>1</sup></b>          | 6.2 V (+18 dBu)   |
| <b>On-axis Frequency Range (-10 dB)</b> | 60 Hz - 20 kHz  |
| <b>Maximum Peak SPL at 1 meter</b>      | 135 dB  |
| <b>Horizontal Coverage (-6 dB)</b>      | 120° H  |
| <b>Vertical Coverage</b>                | Splay dependent   |
| <b>Enclosure Material</b>               | Birch Plywood   |
| <b>Finish</b>                           | Black Polyurea Paint  |
| <b>Transducers/Replacement Parts</b>    | LF: 12MI4/ GM-12MI4<br>MF: 12MI4/ GM-12MI4<br>HF: M-75 / GM-M75N  |
| <b>Connectors</b>                       | INPUT: 1 x Female XLR<br>LOOP THRU: 1 x Male XLR<br>AC INPUT: powerCon NAC3FCA<br>AC OUTPUT: powerCon NAC3FCB |
| <b>AC Power Requirements</b>            | 115 V, 3.6 A, 50 Hz/60 Hz<br>230 V, 1.8 A, 50 Hz/60 Hz  |
| <b>Dimensions (H x W x D)</b>           | 322 x 851 x 432 mm<br>12.7 x 33.5 x 17 in   |
| <b>Weight</b>                           | 40.5 kg (89 lb)   |
| <b>Accessories (optional)</b>           | AX-EV212; AXS-EV212; FUN-4-EV212<br>PL-EV212S; PICKUP-AX-EV212<br>AX-COMBOEV1208<br>AX-COMBOEV1208            |

## Dimensions



Product improvement through research and development is a continuous process at DAS Audio. All specifications subject to change without notice.

**DAS Audio Group, S.L.**  
C/. Islas Baleares, 24  
46988 Fuente del Jarro  
Valencia, SPAIN  
Tel. +34 96 134 0860

**DAS Audio of America, INC.**  
6900 NW 52th Street  
Miami, FL. 33166 - U.S.A.  
TOLL FREE: 1 888 DAS 4 USA

**DAS Audio Asia PTE. LTD.**  
3 Temasek Avenue, Centennial  
Tower #34-36  
Singapore 039190  
Tel. +65 6549 7760

**DAS do Brasil LTDA.**  
Rua Dos Andradas, 382 SL  
Santa Efigênia, São Paulo  
Brasil. CEP: 01208-000  
Tel. +551133330764